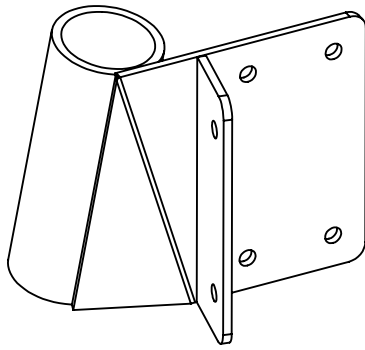


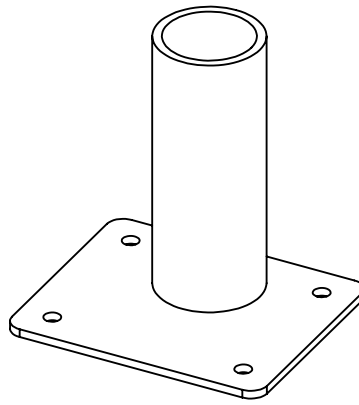
# 07+ Sprinter High Roof Rear Hoist Installation

## 130018/130021



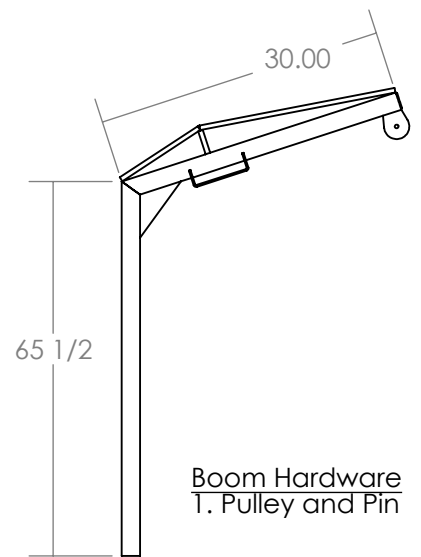
### Upper Mount Hardware

1. 6qty - 3/8" x 1" Hex Bolt Grade 8
2. 12qty - 3/8" Flat Washer
3. 6qty - Nylock Nuts



### Lower Mount Hardware

1. 4qty - 3/8" x 1/2" Hex Bolt Grade 8
2. 8qty - 3/8" Flat Washer
3. 4qty - 3/8" Nylock Nut



### Boom Hardware

1. Pulley and Pin

1) First place the Upper Mount onto the Boom followed by the Lower Mount. After both mounts are on the boom stand the Boom and the Upper Mount into place on either the Driver or Passenger side of the door jam - depending on your hoist set up - hold the Upper Mount properly in place and measure the Upper Mount so that the bottom of the mounting tube is 51-1/2" from the floor. Clamp the Upper mount into place.

#### (Picture 1)

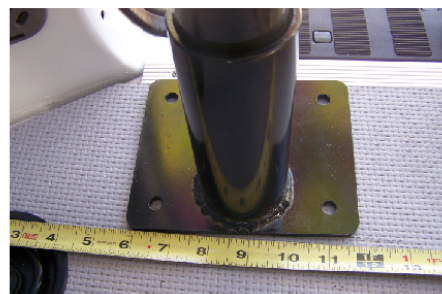
2) Once the Upper Mount is Clamped in place in the correct position you can slide the Lower Mount into place. The Bottom Mount should be rotated so the base plate is facing the Rear of the van. Measure at the center of the tube so it is 9" from the interior side wall of the van and the back edge of the mount is flush with the Aluminum Flashing. (Picture 2) This should square up the hoist to the van. It is also recommended that you double check that the boom is square to the van using a large Square. If needed adjust the Lower Mount position.

(Please do not use a level to do this because the van does not sit level and will not make the boom square to the van.)



#### (Picture 1)

3) Check to make sure the Upper Mount is up against the van correctly and is still at the correct height. Once you are sure the upper mount is in location mark the 6 holes with a marker or pen onto the van body. Also Check to ensure the Lower Mount is still in the correct location then mark the 4 holes on the floor so you dont lose the correct position.



#### (Picture 2)

4) Next, swing the boom out to check it does not hit the top of the vans door jam. There should be at least a 1/2" gap. If there isn't, remove the boom and trim it down accordingly. Reinstall as before and then continue. If everything is ok unclamp the Upper Mount and remove the Boom for drilling.

5) Before drilling check to make sure nothing is in the way of being damaged by drilling. After you have checked there is nothing in the way you may drill the 6 Upper Mount 4 Lower Mount holes using a 3/8 drill. (Be careful not to drill too deep and damage the out side of the body.)

6) Once the all the holes are drilled, place the Boom and Mounts into place and start all the bolts using the correct hardware shown above. Only lightly tighten all the bolts. Swing the boom in and out to make sure it does not bind. If it does bind make the necessary adjustment to correct it. This is usually done by adjusting the Upper Mount. You can also use grease to help it swing freely.

7) After everything is in place and working properly securely tighten down all the bolts. Check once again that the hoist is not binding and swings relatively easy. If everything is correct you done with the Boom installation and can now continue onto the electrical part.