

130043 - 14+ Ford Transit Side Door Hoist Installation

01/04/18

#631322

Hardware

- 4 - 3/8 x 1-1/4" Grade 8 Hex Bolts (Upper mount)
- 4 - 3/8 Flat washers
- 4 - 3/8 Lock washers
- 4 - 5/16" x 1 1/2" Sheet Metal Screw
- 2 - 5/16" Rivet Nut - Flanged
- 2 - 5/16 x 1 • Grade 8 HexBolts
- 2 - 5/16 Flat washers
- 2 - 5/16 Lock washers
- 1 - 1 3/4" Round Push-in Plastic Plug
- 1 - Winch Pully Block (attached to cable on motor)

Tools

- 1 - Measuring Tape
- 1 - Marker
- 1 - 9/16" Wrenches / Ratchets
- 2 - 1/2" Wrenches / Ratchets
- 1 - 3/16" Drill Bit and Drill
- 1 - 3/8" Drill Bit and Drill
- 1 - 1/2" Drill Bit and Drill
- 1 - Rivet Nut Installation Tool
- 1 - 1 3/4" Hole Saw

1) Position the Upper Mount on the B-pillar with top edge 50" above the floor. Refer to photo.

2) Mark the six mounting holes and an access hole next to the Upper Mount.

3) Use the hole saw to drill out the access hole. Drill all six holes to 3/8". Enlarge the two left-most holes to 1/2".

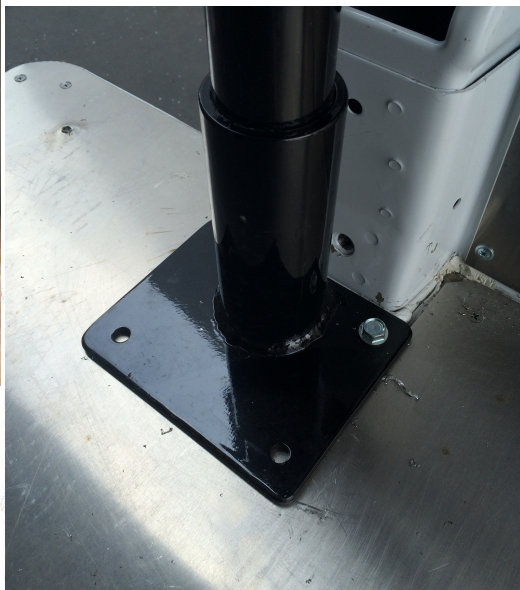


4) Install the (2) 5/16" rivet nuts into the 1/2" holes. Using the rivet nut installation tool tighten down the rivet nut securely. Refer to photo below.



5) Slide the Upper and Lower mounts onto the hoist column and position the hoist in the van. Insert all the bolts for the Upper Mount and use the access hole to insert the backing plates behind the bolts. Loosely tighten the bolts.

6) The Lower Mount should be rotated so the base plate is facing the center of the van and should sit against the B-pillar as shown. This should square up the hoist to the van.



It is recommended to double check that the hoist column is square to the van using a large square. If needed adjust the Lower Mount position. (Please do not use a level to do this because the van does not sit level and will not make the boom square to the van.)

7) Swing the boom out to check it does not hit the top of the door jam. There should be at least a 1/2" gap. If there isn't, remove the hoist and trim the column down accordingly. Reinstall as before and continue.



8) Before drilling the lower mount check holes to make sure nothing is in the way of being damaged by drilling. After you have checked there is nothing in the way, drill the four Lower Mount holes using a 3/16 drill.

9) Screw in the (4) - 5/16" x 1-1/2" with a 3/8 flat washer.

Be careful not to over-tighten the screws so as to avoid stripping out the sheet metal.

10) Swing the boom in and out to make sure it does not bind. If it does bind make the necessary adjustments to the Upper or Lower Mount to straighten out the pivot tubes relative to the hoist column. You can also use grease on the pivot tubes to help the boom swing freely.

11) After everything is in place and working properly, securely tighten down all the bolts. Check once again that the hoist is not binding and swings relatively easy. If everything is correct you are done with the hoist installation